



Plan 2444 ELEVATIONS



498 S. Deep Creek
Dr. Washington, Utah
84790



Arbor



Bamboo



Willow



Hawthorne

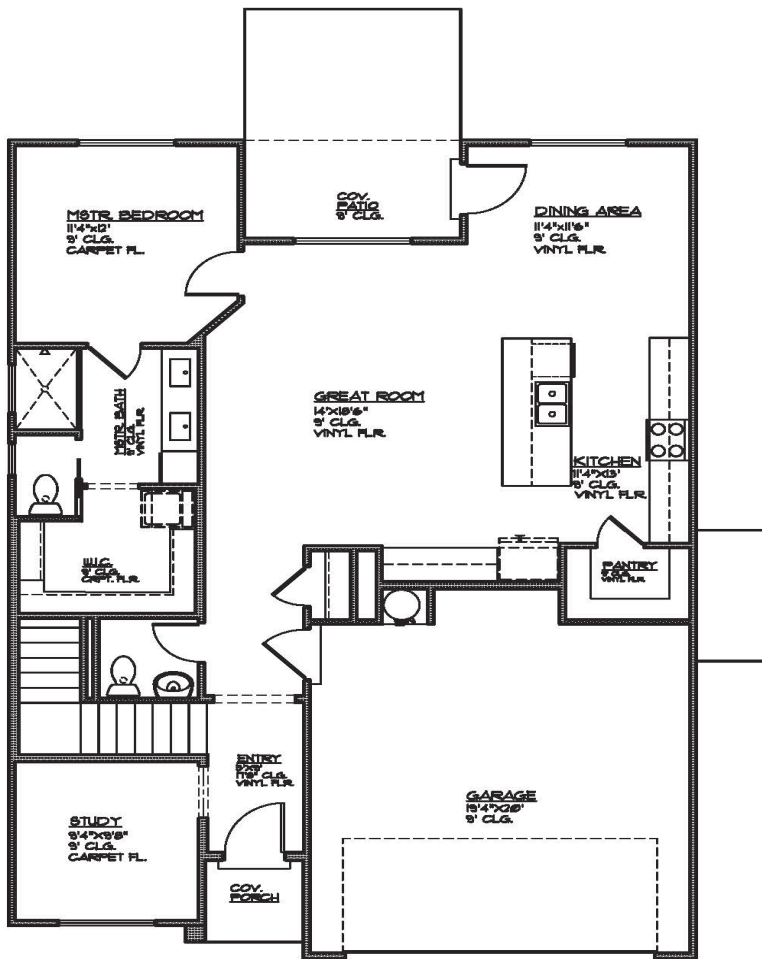


Plan 2444 FLOOR PLAN



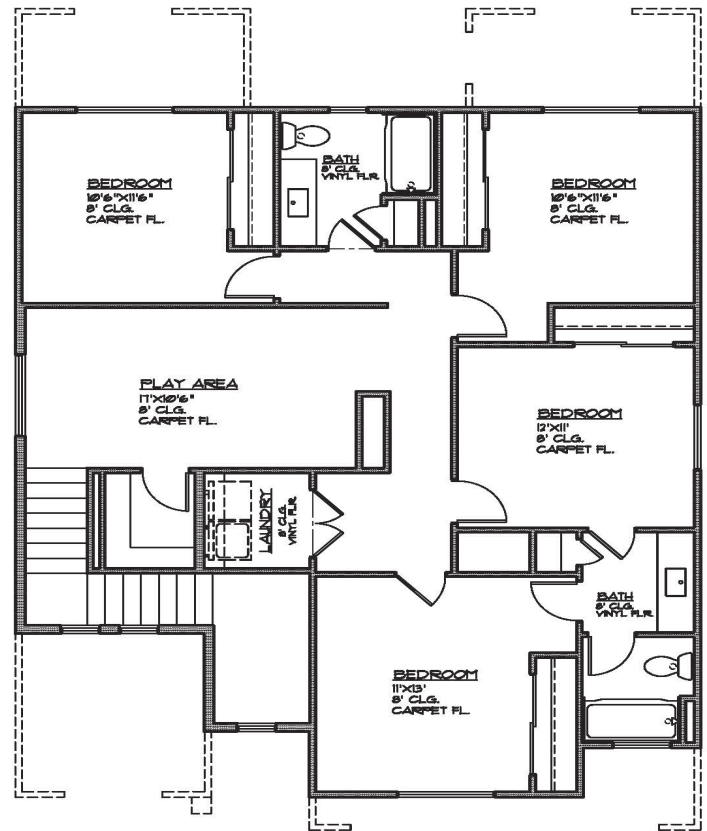
498 S. Deep Creek
Dr. Washington, Utah
84790

2444 Sqft • 6 Beds • 3.5 Baths • 2 Garages • 35' ► x 55' ▲



MAIN FLOOR PLAN

MAIN FLOOR - 1210 SQ. FT.
GARAGE AREA - 425 SQ. FT.
COV. PORCH - 23 SQ. FT.
COV. PATIO - 66 SQ. FT.



UPPER FLOOR PLAN

UPPER FLOOR - 1234 SQ. FT.