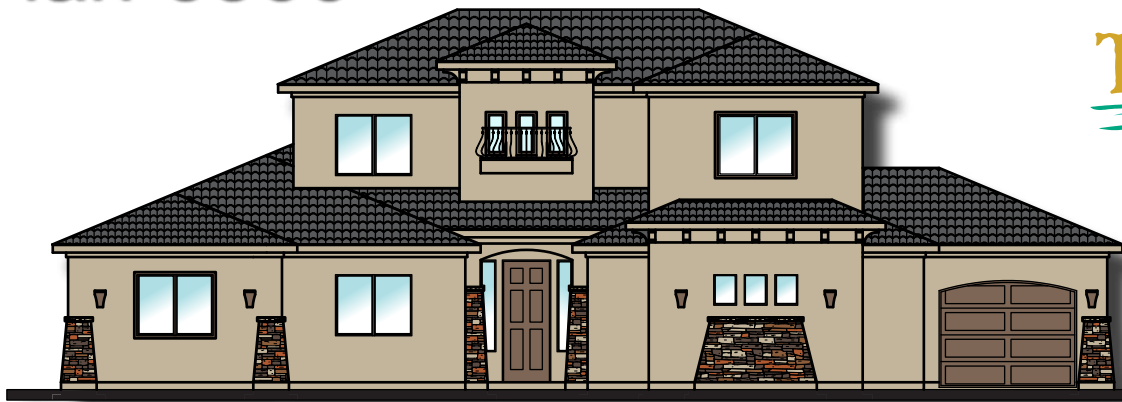


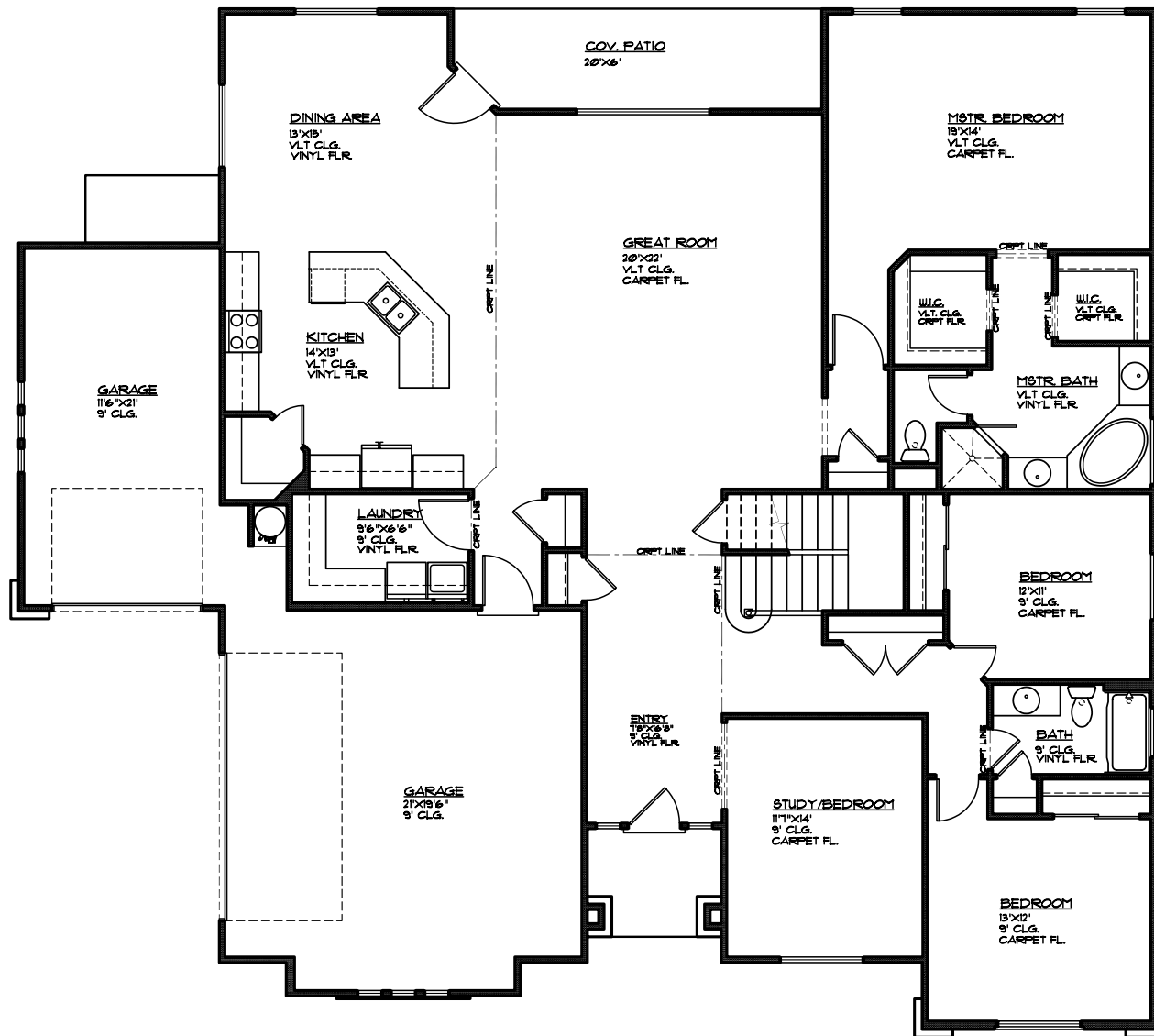
Plan 3506

TWIN CREEKS



- 6 Bedrooms
- 3 Bathrooms
- 3 Car Garage

68' ► x 61' ▲



MAIN FLOOR PLAN

MAIN FLOOR - 2570 SQ. FT.
GARAGE AREA - 118 SQ. FT.

© COPYRIGHT

Marketed by: Prudential St. George Realty

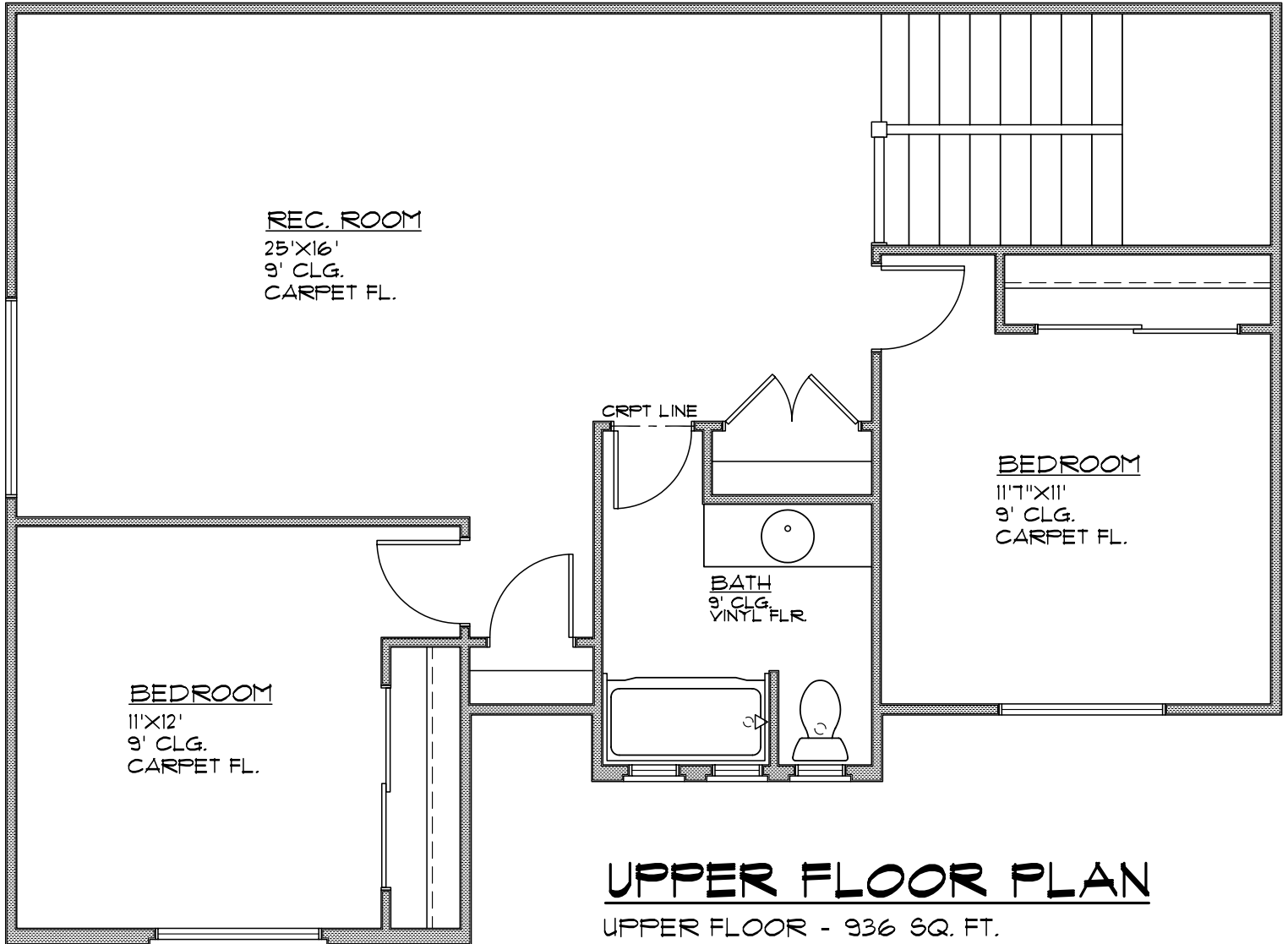
Copyright Ence Homes. All rights reserved. The above renderings are the artists interpretation. Actual construction elevations may differ. The use of these plans is expressly limited to Ence Homes. Re-use, reproduction, or publication by any method, in whole or in part, is prohibited and punishable by law. All square footage is approximate. Actual dimensions will be according to the official architectural drawings.



530 N Dixie Drive St. George, Utah • Ence Homes 877-464-5909

Quality You Can Trust...For Over 50 Years • www.encehomes.com

- 6 Bedrooms
- 3 Bathrooms
- 3 Car Garage



© COPYRIGHT

Marketed by: Prudential St. George Realty

Copyright Ence Homes. All rights reserved. The above renderings are the artists interpretation. Actual construction elevations may differ. The use of these plans is expressly limited to Ence Homes. Re-use, reproduction, or publication by any method, in whole or in part, is prohibited and punishable by law. All square footage is approximate. Actual dimensions will be according to the official architectural drawings.

