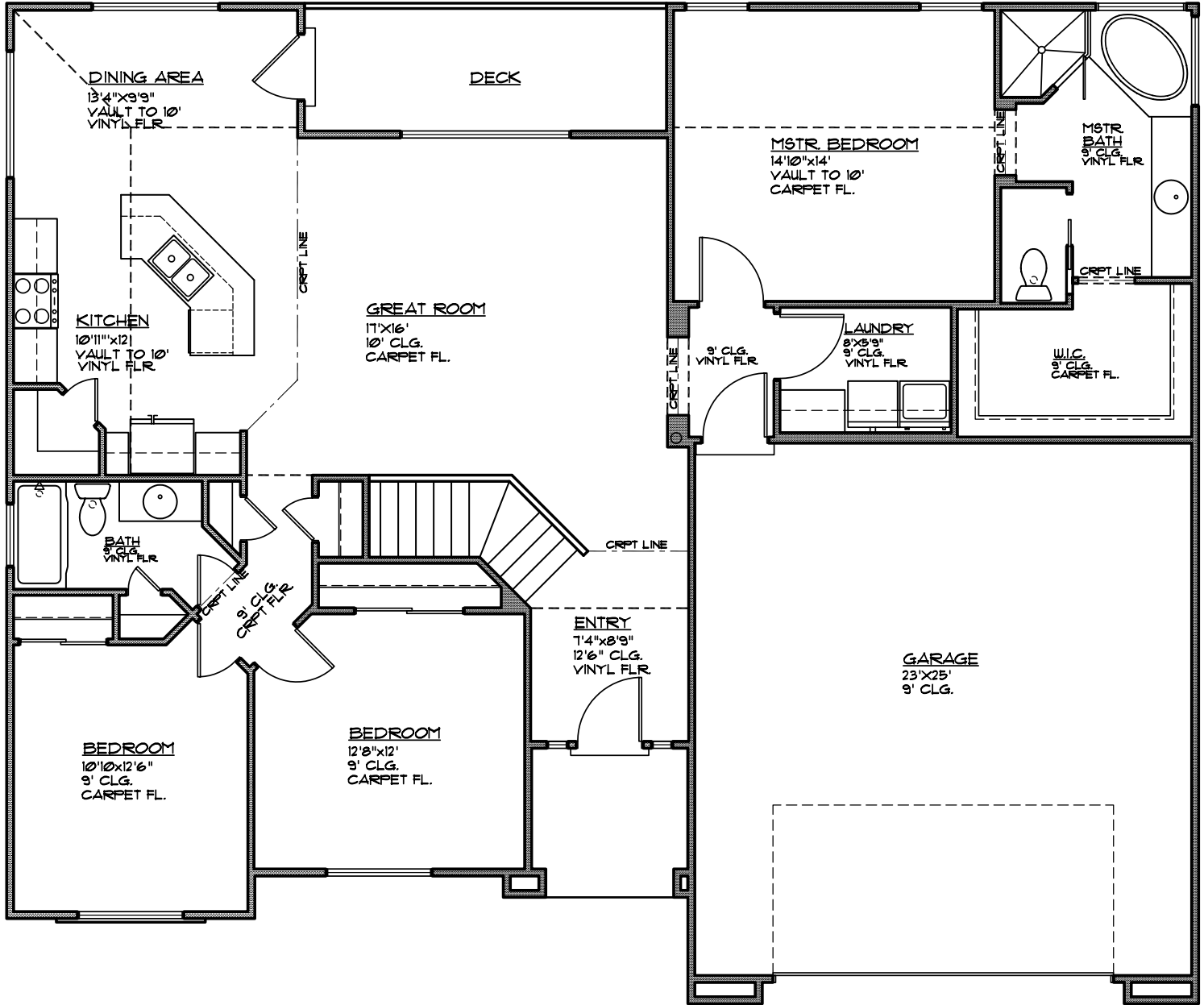


Plan 2857

- Main FL 1,690 Square Feet
- 5 Bedrooms
- 3 Bathrooms
- 2 Car Garage

56' ▶ x 47' ▲



MAIN FLOOR PLAN

MAIN FLOOR - 1690 SQ. FT.
GARAGE AREA - 603 SQ. FT.

© COPYRIGHT



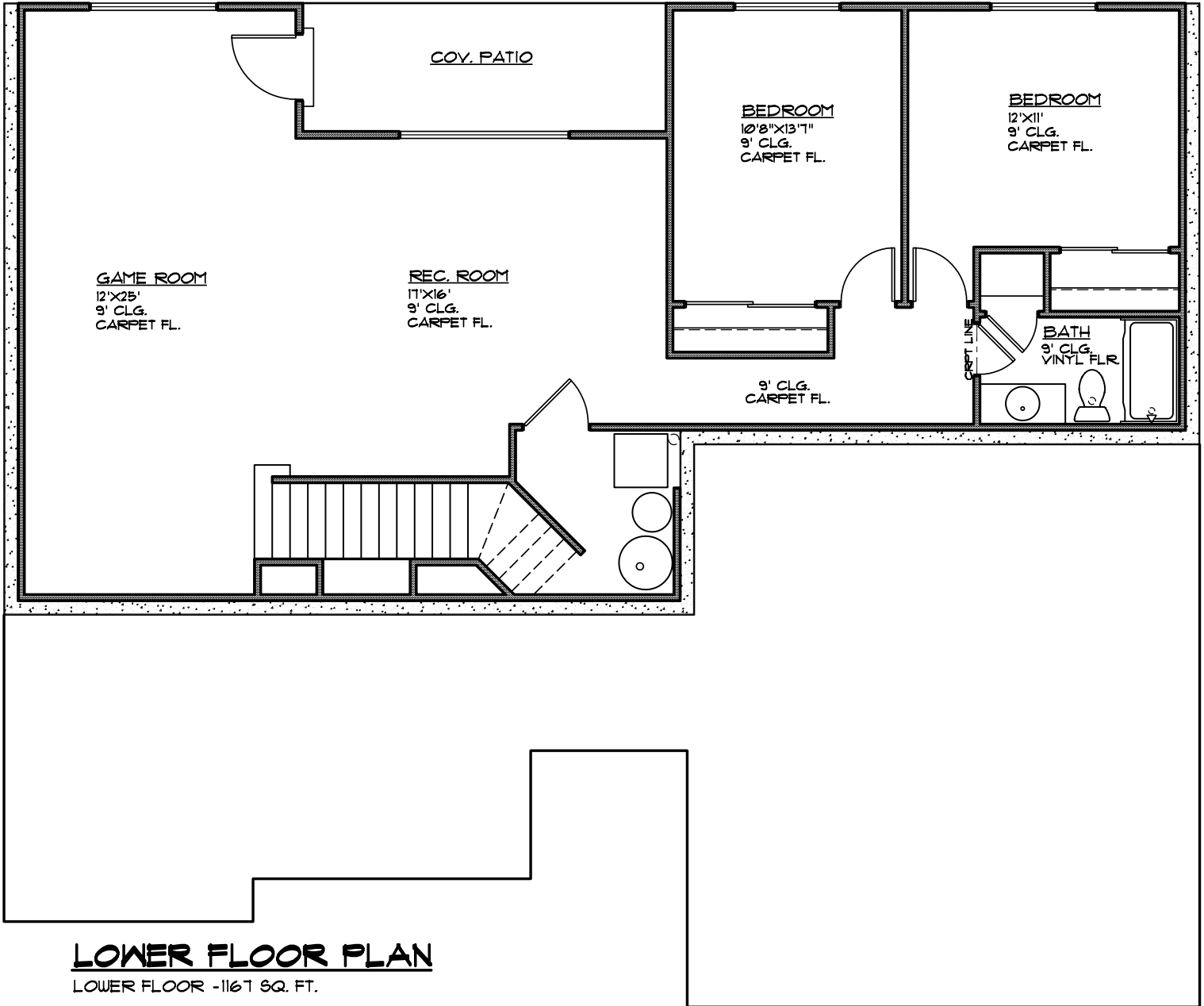
Marketed by: Prudential St. George Realty

Copyright Ence Homes. All rights reserved. The above renderings are the artists interpretation. Actual construction elevations may differ. The use of these plans is expressly limited to Ence Homes. Re-use, reproduction, or publication by any method, in whole or in part, is prohibited and punishable by law. All square footage is approximate. Actual dimensions will be according to the official architectural drawings.

110 S Arroyo Drive St George, Utah 84790 • Colby Park 435-660-1205

Homes starting in the 200's • Quality You Can Trust...For Over 50 Years • www.encehomes.com

- Lower FL 1,167 Square Feet
- 5 Bedrooms
- 3 Bathrooms
- 2 Car Garage



© COPYRIGHT

Marketed by: Prudential St. George Realty

Copyright Ence Homes. All rights reserved. The above renderings are the artists interpretation. Actual construction elevations may differ. The use of these plans is expressly limited to Ence Homes. Re-use, reproduction, or publication by any method, in whole or in part, is prohibited and punishable by law. All square footage is approximate. Actual dimensions will be according to the official architectural drawings.

